



# Diamond Doser System Solutions





**INVEST IN AN  
EASY-TO-USE SYSTEM  
ENGINEERED TO WORK  
HAND-IN-HAND WITH  
ENCAPSULATOR AGENTS**

## **EXPLORING EVOLVING FIRE PROTECTION**

The Diamond Doser Water-driven Proportioner offers a simple solution for today's complex industry hazards. The complete Diamond Doser system is powered by Encapsulator Technology, accurately proportioning Encapsulator Agent concentrate into any new or existing sprinkler system using water flow alone. Experience unmatched fire protection with a fluorine free multi-class agent capable of mitigating lithium-ion battery fires, three-dimensional fires, flowing fuel fires and fire hazards within an energized environment.

**A**

Wood, Paper,  
Cloth, Plastic, Rubber,  
Dust, Etc.

**B**

Ethanol, E10, E85,  
Acetone, Hydraulic Oil,  
Gasoline, Diesel, Etc.

**C**

Transformers,  
Wind Turbines,  
Solar Panels, Etc.

**D**

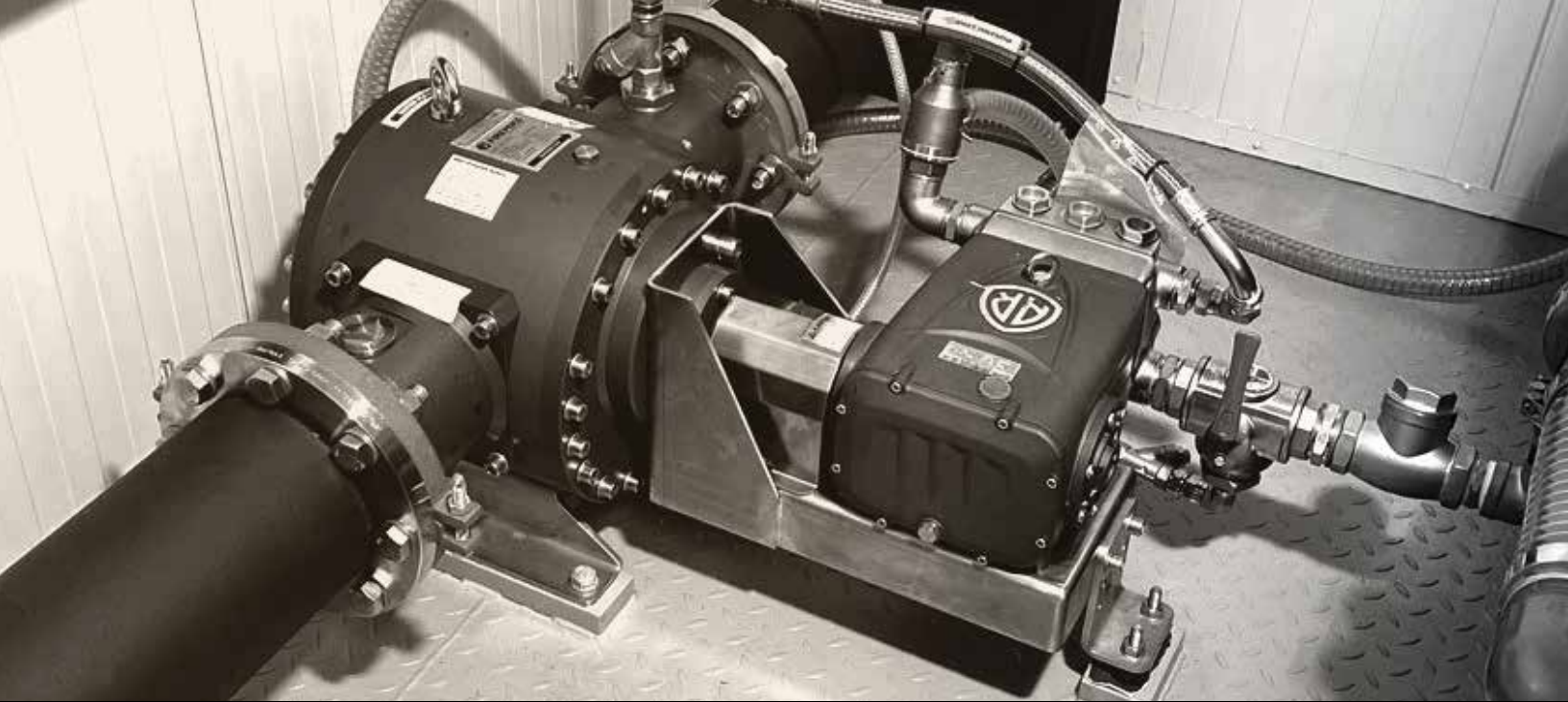
Magnesium,  
Titanium, Aluminum,  
Zirconium, Etc.

**L**

Lithium-ion Batteries,  
Battery Energy Storage  
Systems, Etc.

**HAZARD CONTROL TECHNOLOGIES**

150 WALTER WAY, FAYETTEVILLE, GEORGIA 30214 / +1 770 719 5112 / INFO@HCT-WORLD.COM / HCT-WORLD.COM



**NFPA 18A**

## **ENCAPSULATOR AGENTS (EA)**

**SECTION 7.7**

This section covers the test procedure to evaluate the ability of a water additive solution to form and maintain stable spherical micelles capable of encapsulating combustible and flammable liquids (polar and non-polar), rendering the flammable liquids non-flammable, non-ignitable and non-explosive and maintaining that encapsulation in the presence of high heat over an extended period of time.

**SPHERICAL MICELLE STABILITY**

## **ANX 4.3 LITHIUM-ION BATTERIES**

---

Encapsulator Agents conforming to Section 7.7 have been tested extensively by independent third-parties. This testing has been controlled, scientific and instrumented, documenting fire suppression, control and the elimination of thermal runaway as well as the encapsulation of flammable electrolyte and other explosive off-gases, reducing the toxicity.

**HAZARD CONTROL TECHNOLOGIES**

150 WALTER WAY, FAYETTEVILLE, GEORGIA 30214 / +1 770 719 5112 / INFO@HCT-WORLD.COM / HCT-WORLD.COM

## EXPLORING

# ENGINEERING

Accessible integration for a variety of flow and proportioning needs with custom ranges available upon request. Standard fixed proportioning rates include 1% and 3%.



**DD-00180**

## PROPORTIONING

### FIXED RATES

1%  
3%

### SELECTABLE RATES

0.5-1-3%  
1-2-3%

## DOSING SELECTION

### PISTON UNITS

Viscosities up to 4,500 cP.

### GEAR UNITS

Viscosities up to 8,000 cP.

## FLOW RATES

### UNIT CAPACITIES

Our smallest model has a maximum flow rate of 48 GPM and our largest model a maximum flow rate of 5,283 GPM. Standard unit flow rates include 48, 119, 212, 317, 475, 634, 846, 1,190, 1,587, 2,116 and 2,645 GPM.

We recommend higher application rates for high hazard areas.

### HAZARD CONTROL TECHNOLOGIES

150 WALTER WAY, FAYETTEVILLE, GEORGIA 30214 / +1 770 719 5112 / [INFO@HCT-WORLD.COM](mailto:INFO@HCT-WORLD.COM) / [HCT-WORLD.COM](http://HCT-WORLD.COM)



**EXPLORING**

# INSTALLATION

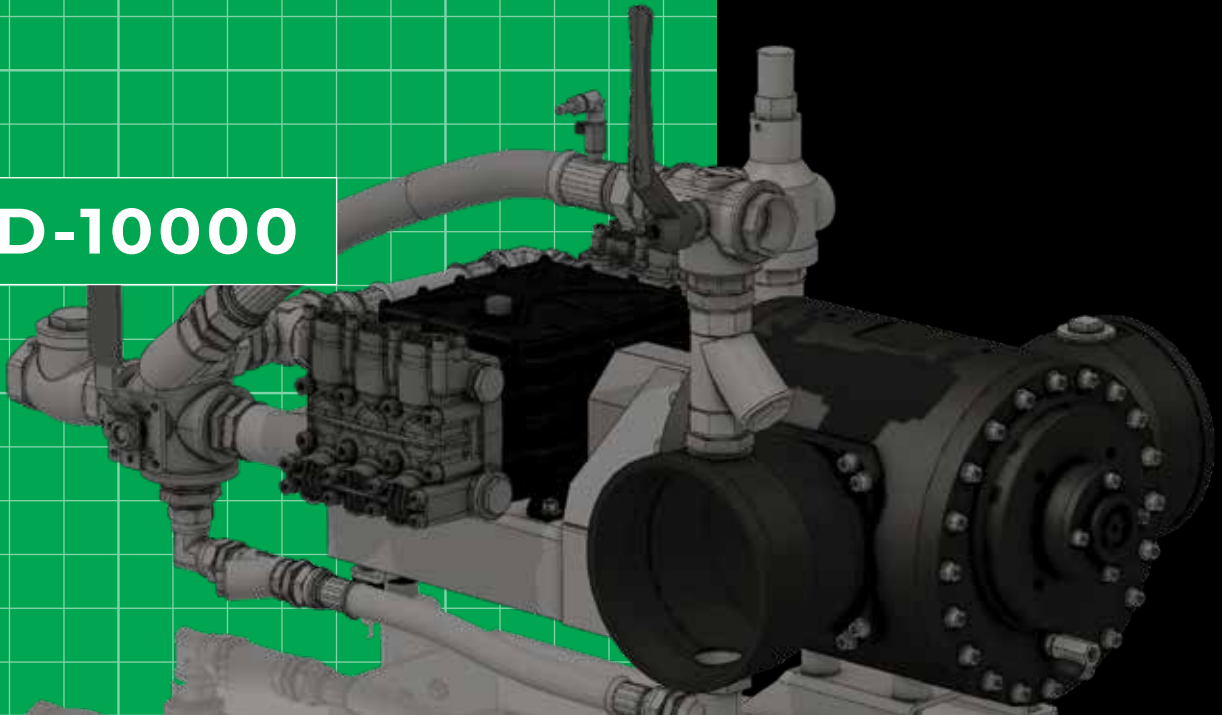
Leave behind the complications and limitations of a bladder tank for an innovative compact one-piece system that's both effortless and economical to install, test and service.

## UNIT OPTIONS

**FIXED SYSTEMS**

**MOBILE SYSTEMS**

**DD-10000**



# AGENT STORAGE

## ATMOSPHERIC TANKS

This storage method allows for a tank that is easy to fill, maintain, commission and test. Annual testing is simple and economical.

## NFPA 25 TESTING

Your facility can perform commissioning certification and annual testing without generating agent solution, eliminating expensive disposal costs.

**HAZARD CONTROL TECHNOLOGIES**

150 WALTER WAY, FAYETTEVILLE, GEORGIA 30214 / +1 770 719 5112 / [INFO@HCT-WORLD.COM](mailto:INFO@HCT-WORLD.COM) / [HCT-WORLD.COM](http://HCT-WORLD.COM)



## LOW MAINTENANCE

No lubrication is required. Simply crank the shaft every two months with the supplied ratchet wrench. Safely refill your tank with ease as needed.

---



## SUPERIOR PROTECTION

Switch to Encapsulator Technology to experience Class A, Class B (Polar), Class B (Non-polar) Class C, Class D and Lithium-ion Battery hazard protection.

---



## ECONOMICAL

Enjoy savings on the system itself, installation and annual testing. Save money over time as there is zero concentrate waste during testing and system use.

---



## ECO-FRIENDLY

Avoid inconvenient unplanned discharges, contamination and unexpected disposal costs with a fluorine free, biodegradable and noncorrosive agent.

### HAZARD CONTROL TECHNOLOGIES

150 WALTER WAY, FAYETTEVILLE, GEORGIA 30214 / +1 770 719 5112 / [INFO@HCT-WORLD.COM](mailto:INFO@HCT-WORLD.COM) / [HCT-WORLD.COM](http://HCT-WORLD.COM)



STANDARD

# UNIT SPECIFICATIONS

UNIT #	MIN FLOW	MAX FLOW	INLET
DD-00180	13 GPM 49 LPM	48 GPM 180 LPM	1.50"
DD-00450	20 GPM 76 LPM	119 GPM 450 LPM	2.00"
DD-00800	36 GPM 136 LPM	212 GPM 800 LPM	2.50"
DD-01200	69 GPM 261 LPM	317 GPM 1,200 LPM	3.00"
DD-01800	69 GPM 261 LPM	475 GPM 1,800 LPM	4.00"
DD-02400	83 GPM 314 LPM	634 GPM 2,400 LPM	4.00"
DD-03200	92 GPM 348 LPM	846 GPM 3,200 LPM	6.00"
DD-04500	132 GPM 500 LPM	1,190 GPM 4,500 LPM	6.00"
DD-06000	158 GPM 598 LPM	1,587 GPM 6,000 LPM	6.00"
DD-08000	211 GPM 799 LPM	2,116 GPM 8,000 LPM	8.00"
DD-10000	211 GPM 799 LPM	2,645 GPM 10,000 LPM	10.00"

FLOW RATES BASED ON 3% PROPORTIONING

**REQUEST QUOTE**  
**RFQ@HCT-WORLD.COM**

**HAZARD CONTROL TECHNOLOGIES**

150 WALTER WAY, FAYETTEVILLE, GEORGIA 30214 / +1 770 719 5112 / INFO@HCT-WORLD.COM / HCT-WORLD.COM



## **HAZARD CONTROL TECHNOLOGIES**

150 WALTER WAY, FAYETTEVILLE, GEORGIA 30214

+1 770 719 5112 / [INFO@HCT-WORLD.COM](mailto:INFO@HCT-WORLD.COM)

[HCT-WORLD.COM](http://HCT-WORLD.COM)



POWERED BY FIREMIKS

