



Diamond Doser[®] System Solutions with F-500 EA[®]

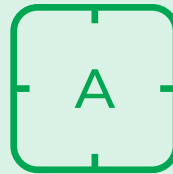




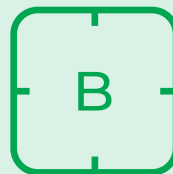
**INVEST IN AN
EASY-TO-USE SYSTEM
ENGINEERED TO WORK
HAND-IN-HAND WITH
F-500 EA®**

EXPLORING EVOLVING FIRE PROTECTION

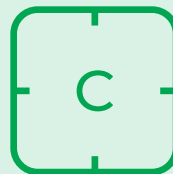
The Diamond Doser® water-driven proportioner offers a simple solution for today's complex industry hazards. The system is powered by F-500 EA®, accurately proportioning concentrate directly into your sprinkler or deluge system using water flow alone. Experience unmatched fire protection with F-500 EA®, a fluorine free agent capable of mitigating multi-class and three-dimensional fires involving flowing fuels, mixed materials, and energized environments.



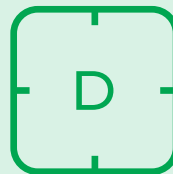
Wood, Paper,
Cloth, Plastic, Rubber,
Dust, Etc.



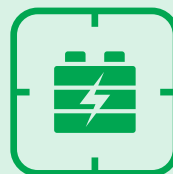
Ethanol, E10, E85,
Acetone, Hydraulic Oil,
Gasoline, Diesel, Etc.



Transformers,
Wind Turbines,
Solar Panels, Etc.



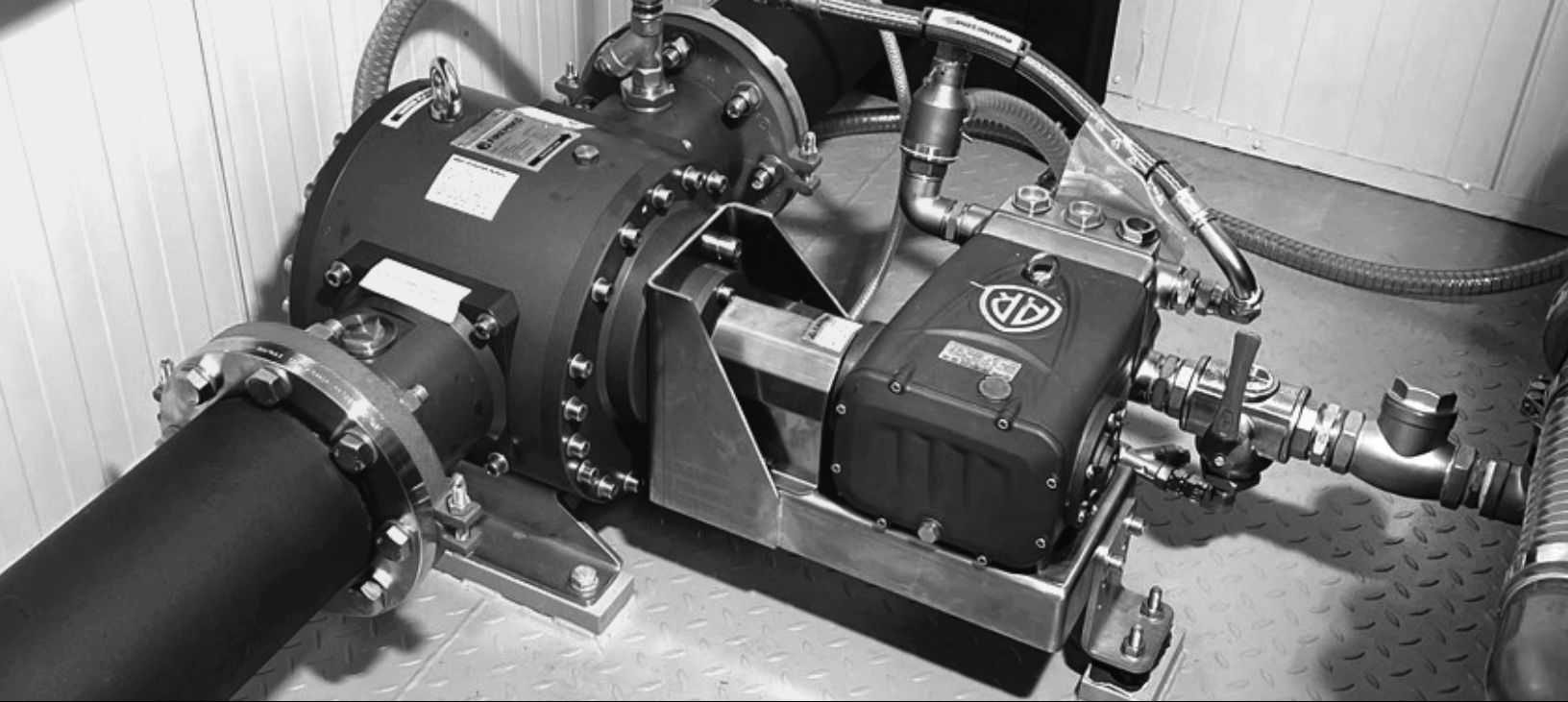
Magnesium,
Titanium, Aluminum,
Zirconium, Etc.



Lithium-ion Batteries,
Battery Energy Storage
Systems, Etc.

HAZARD CONTROL TECHNOLOGIES

150 WALTER WAY, FAYETTEVILLE, GEORGIA 30214 / +1 770 719 5112 / INFO@HCT-WORLD.COM / HCT-WORLD.COM



NFPA 18A

ENCAPSULATOR AGENTS (EA)

SECTION 7.7

This section covers the test procedure to evaluate the ability of a water additive solution to form and maintain stable spherical micelles capable of encapsulating combustible and flammable liquids (polar and non-polar), rendering the flammable liquids non-flammable, non-ignitable, and non-explosive and maintaining encapsulation in the presence of high heat over an extended period of time.

SPHERICAL MICELLE STABILITY

ANX 4.3 ON LITHIUM-ION BATTERIES

Encapsulator Agents conforming to Section 7.7 have been tested extensively by independent third-parties. This testing has been controlled, scientific, and instrumented, documenting fire suppression, control, and the elimination of thermal runaway as well as the encapsulation of flammable electrolyte and other explosive off-gases, reducing the toxicity.

HAZARD CONTROL TECHNOLOGIES

150 WALTER WAY, FAYETTEVILLE, GEORGIA 30214 / +1 770 719 5112 / INFO@HCT-WORLD.COM / HCT-WORLD.COM

EXPLORING

ENGINEERING

Accessible integration for a variety of flow and proportioning needs with custom ranges available upon request. Standard fixed proportioning rates include 1% and 3%.



DD-00180

PROPORTIONING

FIXED RATES

1%
3%

SELECTABLE RATES

0.5-1-3%
1-2-3%

FLOW RATES

UNIT CAPACITIES

Our smallest unit has a maximum flow rate of 180 LPM (48 GPM) while our largest unit has a maximum flow rate of 10,000 LPM (2,645 GPM) based on 3% proportioning.

We recommend higher application rates for high hazard areas.

Higher application rates can be achieved when two DD-10000 Diamond Doser® units are placed parallel on a skid to deliver a flow rate of 20,000 LPM (5,284 GPM) based on 3% proportioning.

HAZARD CONTROL TECHNOLOGIES

150 WALTER WAY, FAYETTEVILLE, GEORGIA 30214 / +1 770 719 5112 / INFO@HCT-WORLD.COM / HCT-WORLD.COM

EXPLORING

INSTALLATION

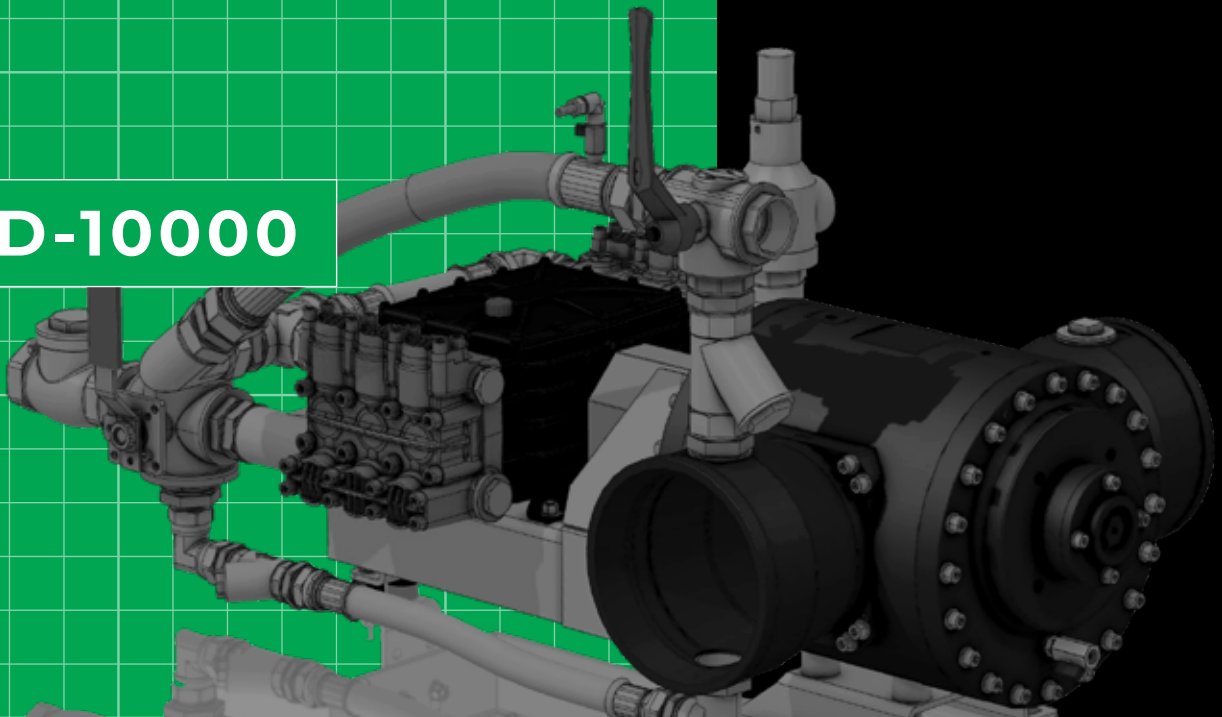
Leave behind the complications and limitations of a bladder tank for an innovative compact one-piece system that's both effortless and economical to install, test, and service.

UNIT OPTIONS

FIXED SYSTEMS

MOBILE SYSTEMS

DD-10000



F-500 EA®

STORAGE

ATMOSPHERIC TANKS

This storage method allows for a tank that is easy to fill, maintain, commission, and test. Annual testing is simple and economical.

NFPA 25 TESTING

Your facility can perform commissioning certification and annual testing without generating agent solution, eliminating expensive disposal costs.

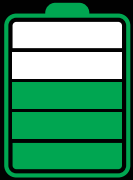
HAZARD CONTROL TECHNOLOGIES

150 WALTER WAY, FAYETTEVILLE, GEORGIA 30214 / +1 770 719 5112 / INFO@HCT-WORLD.COM / HCT-WORLD.COM



LOW MAINTENANCE

No lubrication is required. Simply crank the shaft every two months with the supplied ratchet wrench. Safely refill your F-500 EA® tank with ease as needed.



SUPERIOR PROTECTION

Make F-500 EA® your agent of choice for Class A, Class B (Polar), Class B (Non-polar), Class C, Class D, and lithium-ion battery hazard protection.



ECONOMICAL

Enjoy savings on Diamond Doser® installation and annual testing. Opt for the added savings of zero agent waste with a Dosing Return Valve (DRV).



ECO-FRIENDLY

Avoid unexpected discharges, contamination, and disposal costs when you choose eco-friendly F-500 EA® and add a Dosing Return Valve (DRV) to your system.

HAZARD CONTROL TECHNOLOGIES

150 WALTER WAY, FAYETTEVILLE, GEORGIA 30214 / +1 770 719 5112 / INFO@HCT-WORLD.COM / HCT-WORLD.COM



STANDARD

UNIT SPECIFICATIONS

UNIT #	MIN FLOW	MAX FLOW	INLET
DD-00180	40 LPM 11 GPM	180 LPM 48 GPM	1.50"
DD-00450	75 LPM 20 GPM	450 LPM 119 GPM	2.00"
DD-00800	150 LPM 40 GPM	800 LPM 212 GPM	2.50"
DD-01200	180 LPM 48 GPM	1,200 LPM 317 GPM	3.00"
DD-01800	170 LPM 45 GPM	1,800 LPM 475 GPM	4.00"
DD-02400	230 LPM 61 GPM	2,400 LPM 634 GPM	4.00"
DD-03200	300 LPM 79 GPM	3,200 LPM 846 GPM	6.00"
DD-04500	400 LPM 106 GPM	4,500 LPM 1,190 GPM	6.00"
DD-06000	500 LPM 132 GPM	6,000 LPM 1,587 GPM	6.00"
DD-08000	800 LPM 212 GPM	8,000 LPM 2,116 GPM	8.00"
DD-10000	1,000 LPM 265 GPM	10,000 LPM 2,645 GPM	10.00"

MIN FLOW FIGURES BASED ON 3% PROPORTIONING AT 4 BAR PRESSURE

REQUEST QUOTE
RFQ@HCT-WORLD.COM

HAZARD CONTROL TECHNOLOGIES

150 WALTER WAY, FAYETTEVILLE, GEORGIA 30214 / +1 770 719 5112 / INFO@HCT-WORLD.COM / HCT-WORLD.COM



HAZARD CONTROL TECHNOLOGIES

150 WALTER WAY, FAYETTEVILLE, GEORGIA 30214

+1 770 719 5112 / INFO@HCT-WORLD.COM

HCT-WORLD.COM

DIAMOND DOSER®

POWERED BY FIREMIKS

